

ARCHITECTURAL  
**terrazzite**<sup>®</sup>



The architectural  
flooring system with  
*endless possibilities*

**nuplex**  
Construction Products

# ARCHITECTURAL terrazzite®

Architectural Terrazzite from Nuplex, is a resin-based terrazzo flooring product, designed to recreate the radiance and shine of polished marble floors.

A synthetic, monolithic floor topping, it combines a wide spectrum of design features and colour options with long term durability for floors subject to high levels of pedestrian traffic.

## SUITABLE APPLICATIONS

Architectural Terrazzite is ideally suited for:

- Retail shopping centres and malls
- Supermarkets
- Airport terminals
- Hotel and office foyers
- Feature areas in tile or terrazzo floors
- Prestige residential properties

## AESTHETICS

With far greater flexibility than stone or tiles, Architectural Terrazzite offers the designer an unlimited choice of colours and effects.

Mixed on site, trowelled directly, diamond ground and polished, it exposes the visual texture of the aggregate. After it is sealed and polished, it exposes a smooth, seamless look. It is unlike most floor coverings, as unlike tiles, it has no joints.

We can formulate colours and aggregate blends that allows a designer to achieve patterns and images to suit any project.

## ARCHITECTURAL TERRAZZITE ZV

An environmentally enhanced version, Architectural Terrazzite ZV, has been recently released.

It's primary point of difference is that it is completely odourless to install. This has significant benefits for application in confined spaces and allows uninterrupted trading during refurbishment projects.

## GETTING GREENER

In response to a growing need in the building industry for the adoption of green building programs and technologies, Architectural Terrazzite ZV contain ultra low VOC (Volatile Organic Compounds) emitting materials. The growing list of Nuplex 'green' products can be downloaded from our website.



*Auckland International Airport arrivals hall.*

# A polished act



*Residential Application*

## **COST BENEFITS**

Cost benefits achieved through application of Architectural Terrazzite result from its significantly lower weight compared with other cement based toppings and tiling. Its ease and speed of application means far less downtime for end users, and longer term cost benefits arise from lower maintenance costs and longer floor life.

## **A D V A N T A G E S**

- No grout lines
- No set downs required
- Free form design
- Full colour spectrum
- Cost competitive with insitu terrazzo
- Guaranteed flooring system
- Similar maintenance to terrazzo
- Can match most existing terrazzo tiles
- Fast curing
- Pedestrian access in 3 hours
- Work done day or night
- No loss of trade
- No dust
- Less than 8mm thick
- Can be installed over sound tiles
- Can be patched and repaired insitu
- Full 7 year Warranty on application
- Hygienic floor

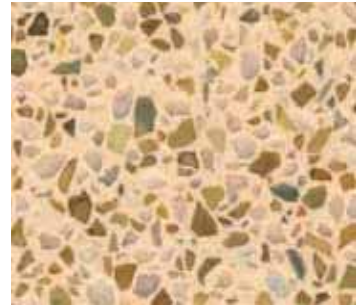




10A01



08B17 - 50%



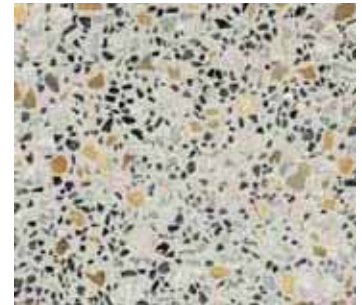
08B17



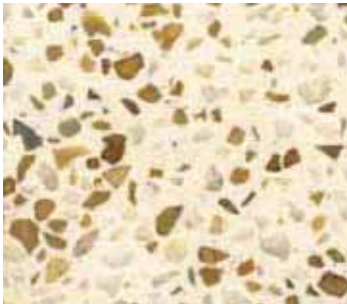
AT5 ref 1129



10A01 - White no Black Chip



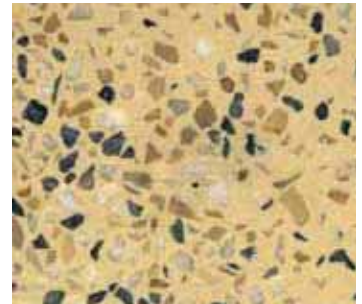
AT15



NC4



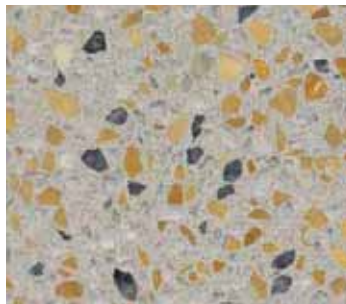
NC5



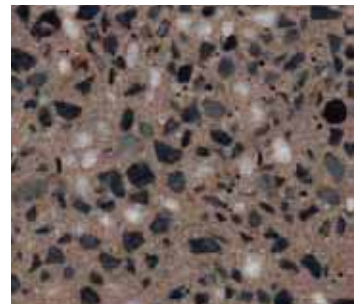
Hay ref 1129



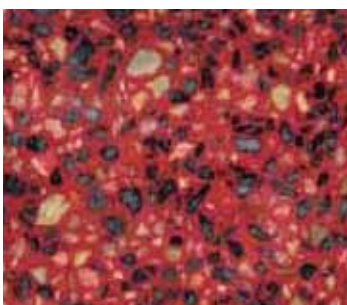
6.5 B06



ref 1139



08 B23 ref 1501



1BR53 ref 1108 Jazz



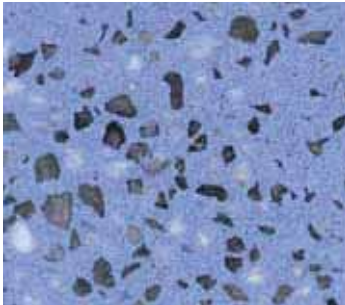
1BR53 ref 1108 Jazz, no Black



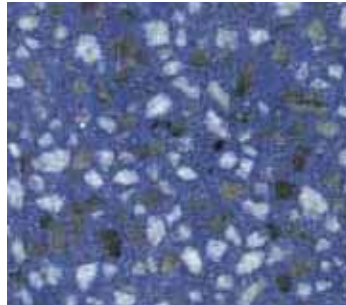
04C40

# Colour range

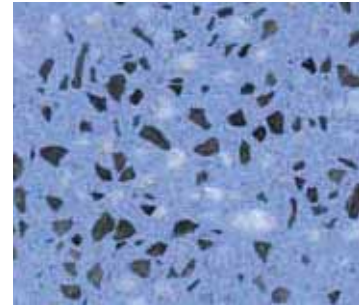
The colours displayed in this chart have been commissioned for previous, unique projects, and serve only as a guide to possible colour and textural combinations.



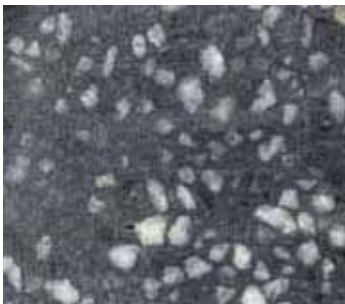
20D43



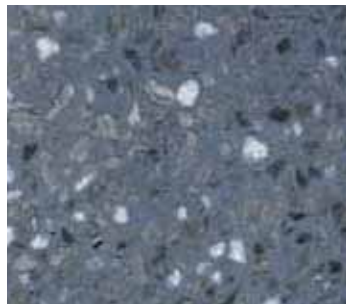
20D45



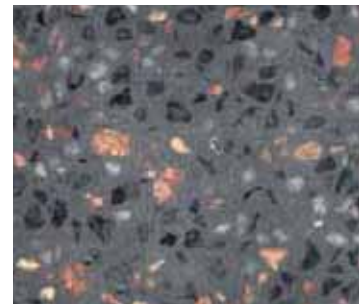
20E51



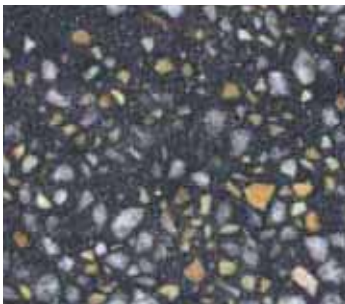
30B07 041 ref 1129



5405C



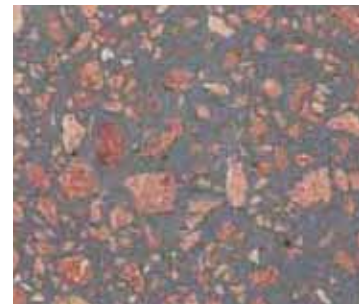
Charcoal



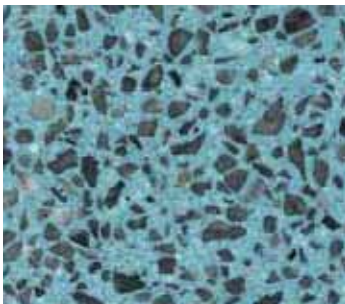
DMJ3



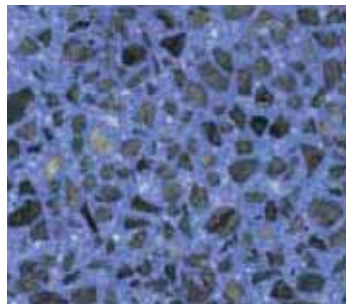
Black Red 1112



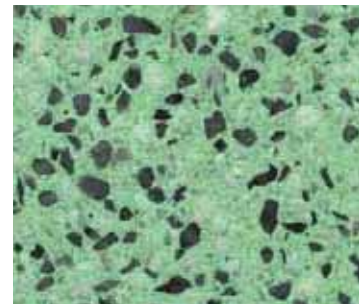
Charcoal



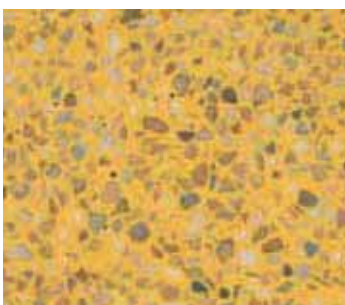
US5



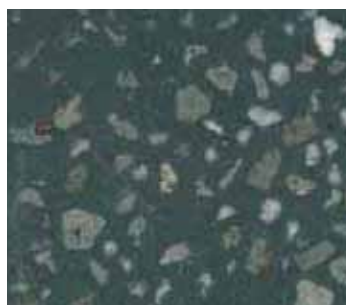
US7



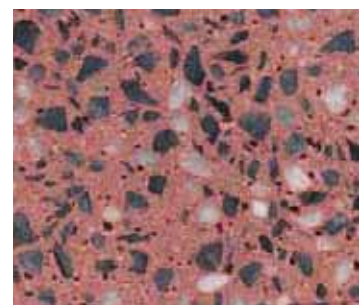
US8



US10



Green #1



BS04C37

# Completed Projects



*Darling Harbour, Sydney*



*Westfield City West*



*Oasis Shopping Centre, Gold Coast*



*Lismore Shopping Centre*



*McArthur Central, Brisbane*



*Greenbank RSL*

# Technical Information

## MANUFACTURE OF MATERIALS

All resin materials shall be produced supplied or specified by Nuplex Construction Products. To avoid incompatibility of component material it is essential that Nuplex technical staff be consulted before any product other than those specified is considered as a substitute.

## FINISH OPTIONS

The colours and patterns that can be achieved with **Architectural Terrazzite** are almost limitless. It is important that a 300 mm x 300 mm sample of colour and pattern be submitted to the architect, engineer, client for approval prior to commencement of work on site.

## SUBSTRATES

### SHALL BE STABLE AND SOLID

Ability of new or existing floors to take addition loads as a result of the **Architectural Terrazzite** must be checked prior to installing. All expansion joints, cracks, etc, are to be treated in accordance with details in Section 7.5 of NUPLEX Specification #330. Nuplex Construction Products should be consulted when installing **Architectural Terrazzite** on any suspended floor slabs.

### NEW CONCRETE

Shall have a surface which has been mechanically trowelled to an NZS3114: 1987 or AS3610: 1995 U3 or better then lightly broomed after compaction then screeding to assist with mechanical bond. A minimum compression strength of 25 MPA at 28 days cure. All cement laitance or other contaminants, curing membranes, any roughly screeded or floating patches or areas, need to be mechanically removed from the surface.

### OLD CONCRETE REQUIREMENTS

Remove all contaminants including cement laitance, dirt, grease, oil, existing coatings/toppings, unsound substrate, etc, by shot blasting or grinding, etc, as appropriate. Deep depressions, defects, hollows, etc, to be repaired or filled using NUPLEX STZ Prefill system.

## OTHER SUBSTRATES

Refer Nuplex Construction Products for a specific recommendation.

**CAUTION:** Moisture content of all surfaces is critical to the successful application of **Architectural Terrazzite**. All substrates should have a moisture content less than 75% RH using a surface hygrometer. A simple guide is to tape seal a 1 m<sup>2</sup> plastic sheet to the surface for 24 hours, if any condensation is present on inspection – do not proceed.

## APPLICATION

Apply **Architectural Terrazzite** flooring to correctly prepared and sealed substrate by hand trowel and/or power float.

**Architectural Terrazzite** must be applied in such a manner to achieve a minimum 6mm thickness when ground and polished.

Floor patterns may be achieved with the use of angle strip between sections of the floor.

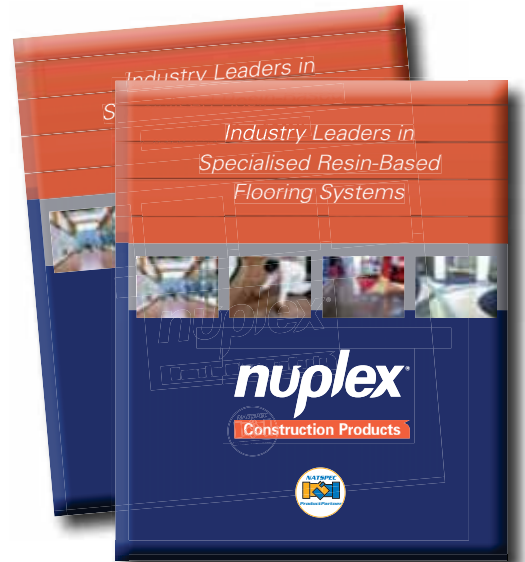
Grinding shall be accomplished by using standard terrazzo grinding equipment. Grouting of the ground surface will precede finishing with 280 grit stone. Surface sealing and polishing is carried out using recommended Nuplex sealers and approved polish systems. Nuplex QA program is to be completed by the Nuplex contractor.

## OPTIONAL

Low odour versions are now available.

This is not a full specification. For more detailed information on treatment of cracks, control joints, substrates, etc, please refer to **Architectural Terrazzite** specification #330 available from Nuplex Construction Products.

ARCHITECTURAL  
**terrazzite**<sup>®</sup>



To learn more about Architectural Terrazzite  
or to receive a copy of our product catalogue  
contact Nuplex Construction Products:

**AUSTRALIA: 1800 007 322**

**[www.nuplexconstruction.com.au](http://www.nuplexconstruction.com.au)**

**NEW ZEALAND: 0508 882 288**

**[www.nuplexconstruction.co.nz](http://www.nuplexconstruction.co.nz)**

- **Surecote 200<sup>®</sup>**
- **Surecote 500<sup>®</sup>**
- **Sureshield<sup>®</sup>**
- **Terraflake<sup>®</sup>**
- **Creteseal<sup>®</sup>**
- **Nuthane<sup>®</sup>**
- **RapidShield<sup>®</sup>**
- **RapidFloor<sup>®</sup>**

***nuplex***  
Construction Products