

Use combinations of various Nuplex systems:

Floor	Wall	Ceiling
VINYL: Nuplex CPS Safety floors – and Durafloor & Efina commercial	Formwall White satin , pastels and Colours	Formwall Ceiling
Sureshield, Nuthane and other Resin based Floor toppings	Formwall White satin , pastels and Colours	Formwall Ceiling

CONTRACTORS

Approved and experienced contractors are available upon request. Many of these contractors can install either the resin flooring or vinyl flooring. This ensures that one contractor is responsible to a quality installation and to provide a seamless floor—wall solution.

Colours: Nuplex stock sheets in satin white. This is used in the majority of installations. Other colours are available on import.



Formwall installation showing smooth, thermoformed external corner and formed window insets.



Your agent / contractor / representative:

Mobile:

Email:



FORMWALL

Performance Hygienic wall Lining
The complete wall to floor solution
People— Products— Performance

Formwall is a PVC wall cladding system specifically designed for the healthcare, hospitality, food and process industry. Formwall is hard and durable, and highly resistant to impact, abrasion, the thermal shock, chemicals and food acids. It is non-porous, hygienic and easily cleaned. Its ability to be curved and shaped through thermoforming ensures its versatility in modern, hygienic, commercial construction.



Formwall is 2.5mm sheet PVC sheet that is adhesive fixed to backing and then seamed in a variety of ways to provide seamless lining / walling. The materials are based on BIOCLAD 2.5mm sheet wall cladding.

- It integrates with vinyl and resin floors.
 - It may be thermoformed to create smooth, radiused internal and external corners that are easy to clean, hence hygienic.
 - Unlike other wall linings it is semi-flexible and will not crack under normal impact.
 - Normally heated welded to provide seamless finishes.
 - Fully adhesive bonded means resistant to impact and this prevents water ingress which may create hygiene issues.
 - Attractive satin finish.
 - No smell during application.
 - Non Tainting & Non dusting
 - Dense and impervious
 - Easily cleaned
 - High adhesion and wear resistance
- Fire rating: Group 1.
 - Formwall sheets have an anti-microbial action. The PVC antimicrobial panel containing Biocote® silver Ion antimicrobial additive throughout the product thickness with a lifetime guarantee and a single source manufacturer /installer warranty.

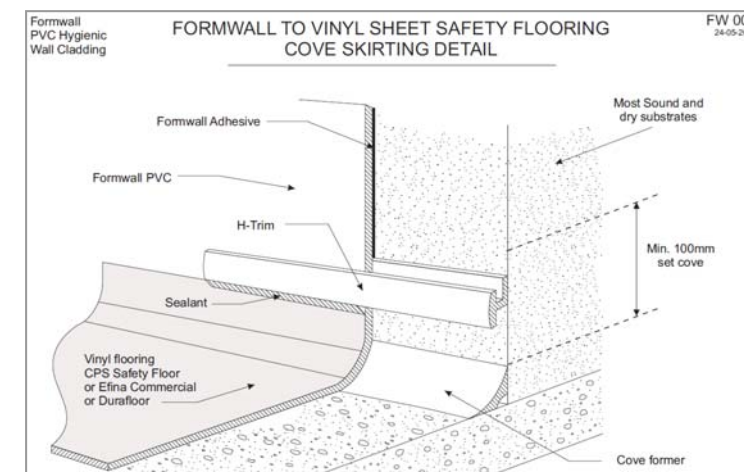
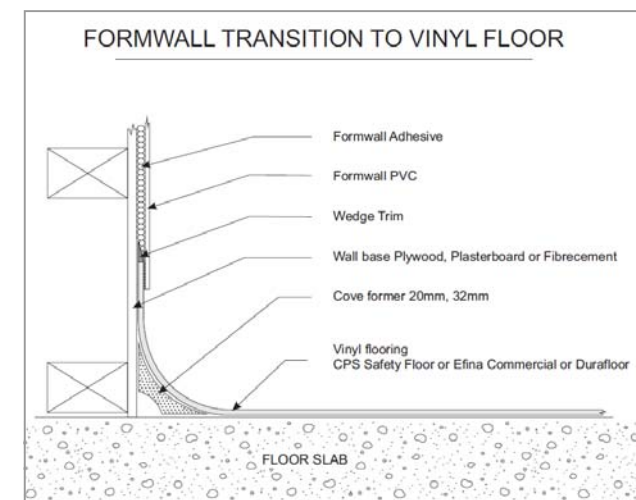
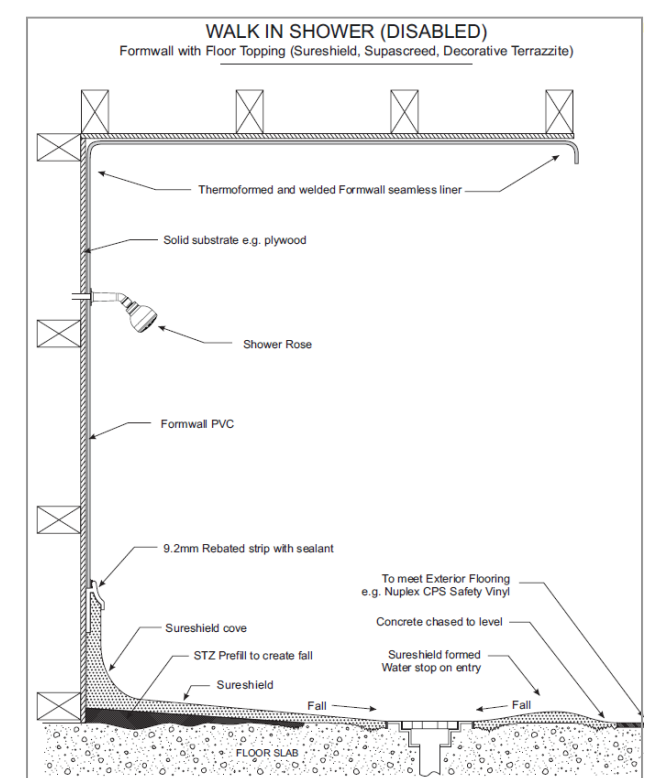
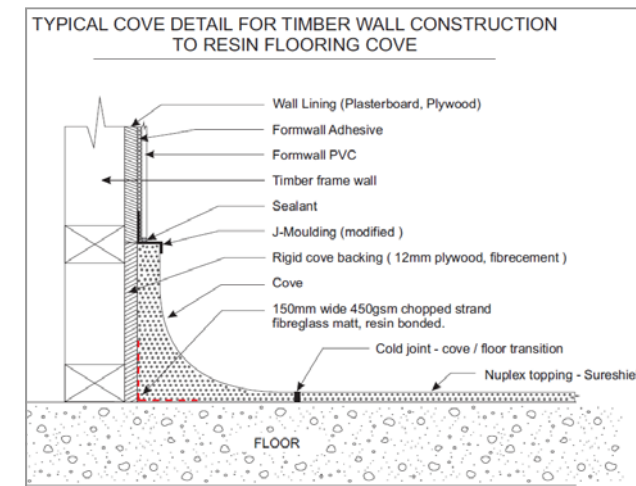
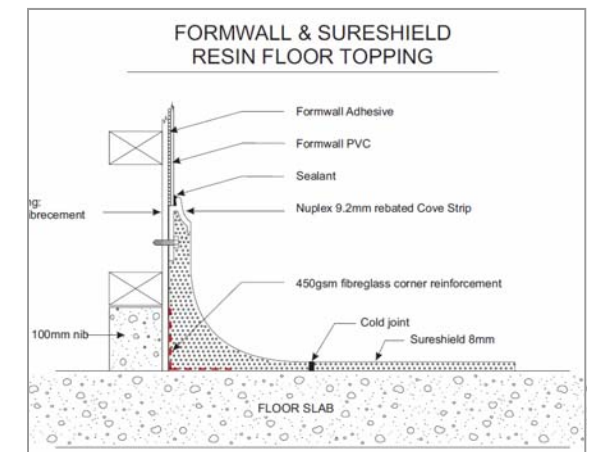
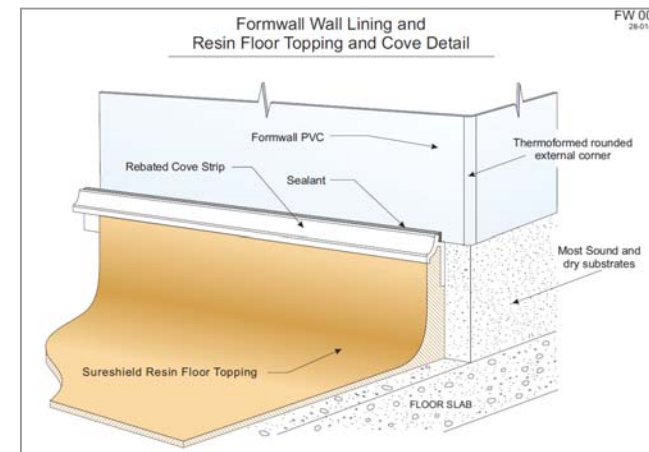
www.nuplexconstruction.co.nz
Email ncpsales@nuplex.co.nz
Freephone: 0508-882288
Freefax 0508-553344

Order Form / item	Item Code	Stock	Order Quantity per item
SHEETS			
FORMWALL PVC SHEET 3.05m x 1.22m Standard White	BLXW104	S	
FORMWALL PVC SHEET 2.8m x 1.22m Standard White	BLXW103275	I	
FORMWALL PVC SHEET 2.5m x 1.22m Standard White	BLXW103	S	
FORMWALL PVC SHEET PASTEL COLOUR* 3.05m x 1.22m	BLXW137P*	I	
FORMWALL PVC SHEET VIVID COLOUR* 3.05m x 1.22m	BLXW161V*	I	
TRIMS - White			
FORMWALL JOINT STRIP 2-PART 3m WHITE	BLXA83130	S	
FORMWALL JOINT STRIP 1-PART 3m WHITE with BREAK OUT SECTION	BLXA83125	S	
FORMWALL EDGE TRIM 2-PART 3m WHITE	BLXA83330	S	
FORMWALL EDGE TRIM 1-PART 3m WHITE	BLXA80725	S	
FORMWALL EXTERNAL ANGLE 50mm x 50mm x 3m 1-PART 3m WHITE	BLXF83630	S	
FORMWALL INTERNAL ANGLE 50mm x 50mm x 3m 1-PART 3m WHITE	BLXF83730	S	
FORMWALL WSR01 WHITE WELD ROD 50 Im Coil	BLXWSR01	S	
TRIMS - Pastel			
FORMWALL JOINT STRIP 2-PART 3m COLOUR*	BLXA831P*	I	
FORMWALL EDGE TRIM 2-PART 3m COLOUR*	BLXA833P*	I	
FORMWALL WSR* COLOUR WELD ROD 50 Im Coil	BLXWSR*	I	
TRIMS - Vivid			
FORMWALL JOINT STRIP 2-PART 3m COLOUR*	BLXA831V*	I	
FORMWALL EDGE TRIM 2-PART 3m COLOUR*	BLXA833V*	I	
FORMWALL WSR* COLOUR WELD ROD 50 Im Coil	BLXWSR*	I	
T&G Ceiling Panel			
FORMWALL CEILING T & G PANEL 3m x 250mm x 10mm	BLXP25030	I	
FORMWALL CEILING T & G PANEL 4m x 250mm x 10mm	BLXP25040	I	
FORMWALL CEILING T & G PANEL 5m x 250mm x 10mm	BLXP25050	I	
FORMWALL CEILING DIVISION BAR 3m	BLXP25830	I	
FORMWALL CEILING EDGE TRIM 3m	BLXP25930	I	
FORMWALL CEILING PVC BATTEN 3m	BLXP25350	I	
FORMWALL CEILING OUTSIDE CORNER 3m	BLXP25530	I	
FORMWALL CEILING INSIDE CORNER 3m	BLXP25730	I	
Accessories			
FORMWALL 305ml TUBES ADVANCED ADHESIVE	BLXAP600	S	
FORMWALL NPU ADHESIVE 2-PART 6.5kg KIT	BNANPU	S	
FORMWALL SQUARE NOTCH TROWEL 5mm x 5mm x 5mm	BVXT0402	S	
FORMWALL ANTI-STATIC AGENT 5 LITRE	BLXA80905	S	
FORMWALL PVC CLEANER 325ml	BLXA859325	S	
FORMWALL SEALANT Colour* 310ml - White ex stock only	BLXA80*	S	
FORMWALL THERMO WELD DOUBLE SIDED FOAM TAPE 2mm x 50mm x 25m	BLXA91525	S	
FORMWALL DOUBLE SIDED BUTYL RUBBER TAPE 1.5mm x 25mm x 30m	BLXA81530	S	
FORMWALL PVC WELD FILLET 2mm x 0.1mm x 65mm x 15m	BLXWBSU200	S	
FORMWALL THERMOFORMER 3m x 170 x 100mm	BLXHEAT	S	
FORMWALL THERMOFORMER HIRE per DAY	BLXTFHIRE	S	
FORMWALL DIFFUSERS C12/C15/C19 + SD FRAME	BLXSDC..	MONZ	
FORMWALL DIFFUSERS C12/C15/C19 + CLEAN ROOM FRAME	BLXDRC..	MONZ	

* List the colour required

Stock: S = Stock NZ, I = Indent 10-12 weeks from time of order minimums apply, contact Nuplex for detailed information, MONZ = Made to order NZ

Minimums apply for Pastels & Vivid colours, contact Nuplex for detailed information



Full details are available at http://www.nuplexconstruction.co.nz/pdf/Formwall_Details2.pdf

nuplex
construction products
engineered construction solutions